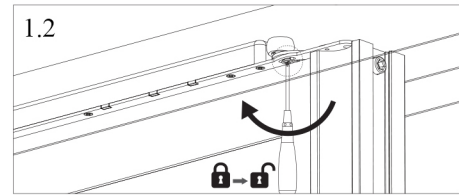
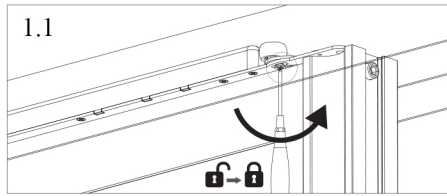




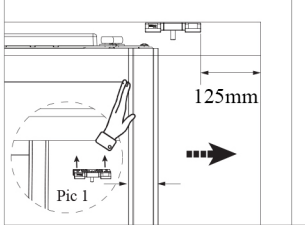
# Glide Fitting Instructions.

1. Lock the soft close assembly once the door is in the track (1.1)

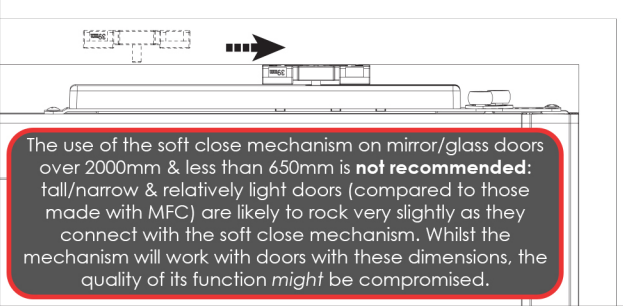
The assembly can be unlocked if required. (1.2)



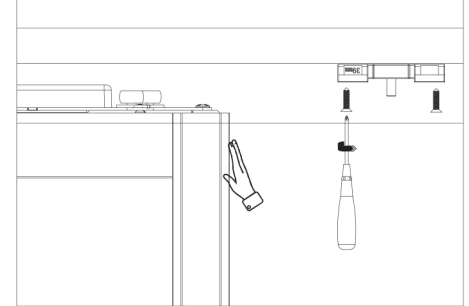
2. Place the actuator in any position on the top track and then push the door to the doorpost.



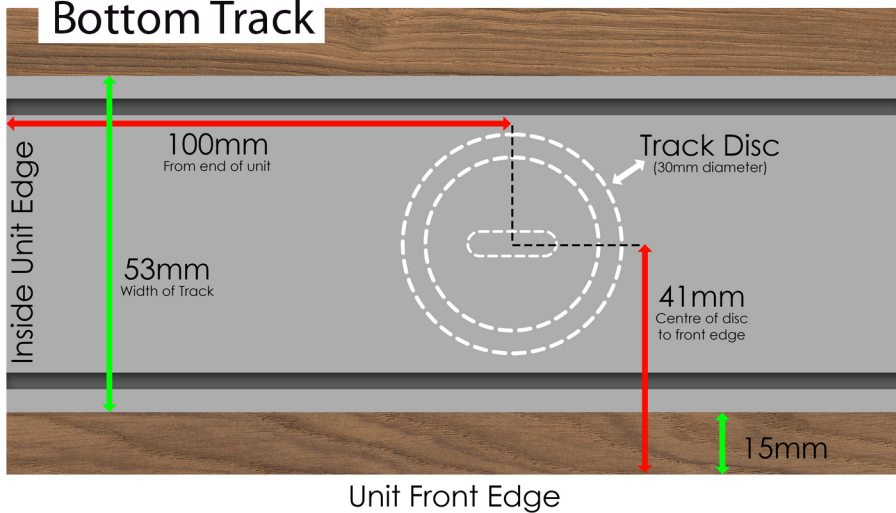
3. The actuator has been automatically located.



4. Fix the actuator



## Bottom Track



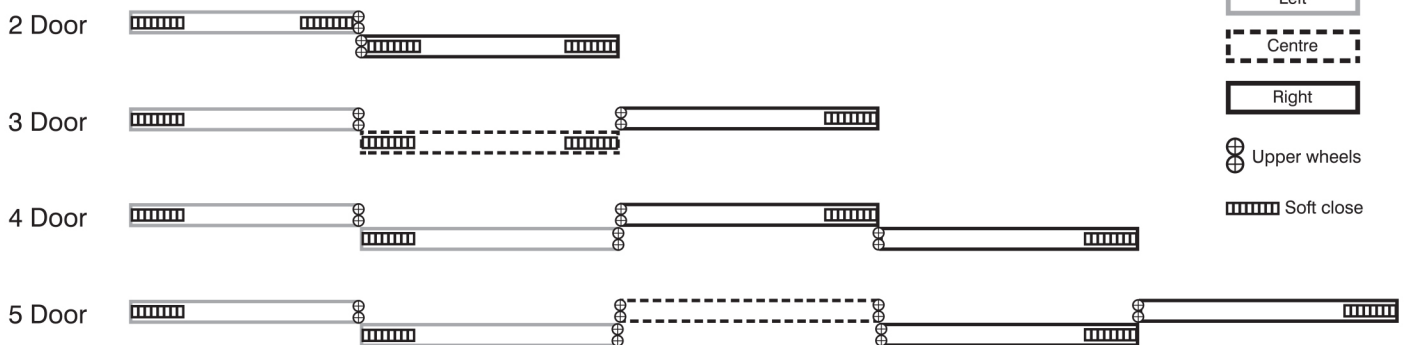
One disc should be placed 100mm from each side of the unit with the remaining discs spaced equally over the unit's width (Fig. 1)

If top track is flush with front edge of unit, centre of discs should be placed 41mm from the front edge



Once the discs have been fitted to the unit base (Fig. 1), the track can be fitted in place over the discs (Fig. 2)

## Soft Close Door Configuration



## Height Adjustment **\* We recommend lying the door on its side or supporting its weight before adjusting the wheels \***

Adjusting the wheels while the door is in situ could cause damage to the mechanism due to the weight of the door



- Lift the rubber seal.
- Using a 4mm allen key, **loosen but DO NOT REMOVE the screw.**
- The middle screw unlocks & locks the wheels into place once the height has been set.



- Lift the rubber seal.
- Use a 4mm allen key.
- The bottom screw adjusts the height of the door:
  - Clockwise - Up
  - Anti-clockwise - Down
- **DO NOT REMOVE THE SCREW.**