

Glide Sliding Doors



Order Form

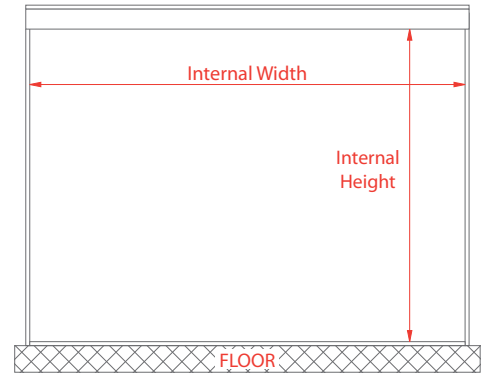
Return to: Hill's Panel Products Ltd. Scottfield Road Oldham OL8 1LA
Tel: 0161 620 5656 **Fax:** 0800 146 209 **E-Mail:** sales@hponline.co.uk

Company/Invoice Address:		Delivery Address: (if different)	
Postcode:	Telephone:	Postcode:	Telephone:
	Fax:		
Account No.		Contact Name:	

Order Ref: _____ Date Ordered: / / Date Required: / /

Frame Style & Colour:

	Aluminium	Black	Brushed Pearl
Primo	<input type="radio"/>	<input type="radio"/>	<input type="radio"/>
Lucine	<input type="radio"/>	<input type="radio"/>	<input type="radio"/>
Ronda	<input type="radio"/>	<input type="radio"/>	<input type="radio"/>



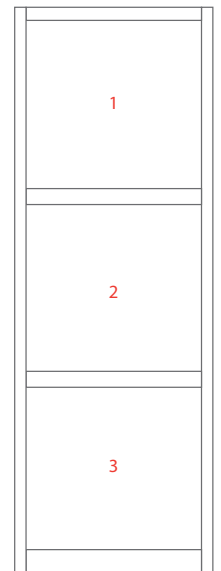
Aperture Details:

Internal Height: _____ mm Internal Width: _____ mm

*Note: Our doors are available in sizes from 450mm up to 1220mm. Please ensure that if you divide internal unit width between the number of doors, the result is within that range.

Door Details:

	Door 1		Door 2		Door 3		Door 4	
No. of Panels.	1	3	1	3	1	3	1	3
Quantity								
Panel 1								
Material								
Colour								
Panel 2 (if required)								
Material								
Colour								
Panel 3 (if required)								
Material								
Colour								
Number of Adhesive Divider Strips Required Per Door*								



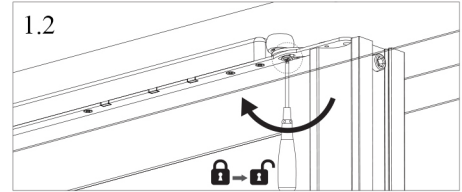
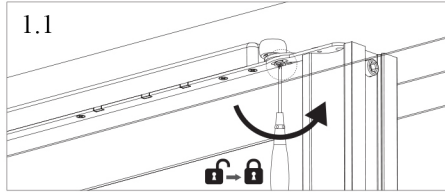
Example Door

*Note: Adhesive dividers are an optional extra that can be used to split panels, giving the visual effect of a multiple panel door.

PLEASE NOTE: HPP accepts no liability for the suitability of goods supplied to the buyers own measurements. Your attention is drawn to our full Terms & Conditions at hponline.co.uk/TandCs.

Customer Signature

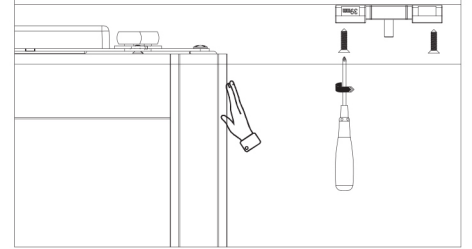
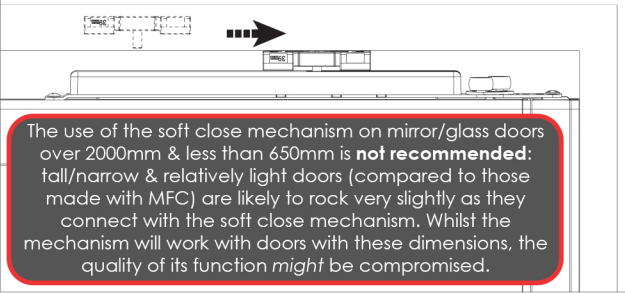
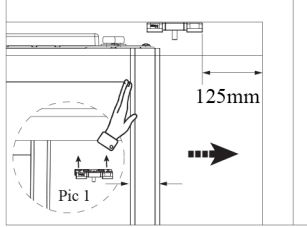
1. Lock the soft close assembly once the door is in the track (1.1)
The assembly can be unlocked if required. (1.2)



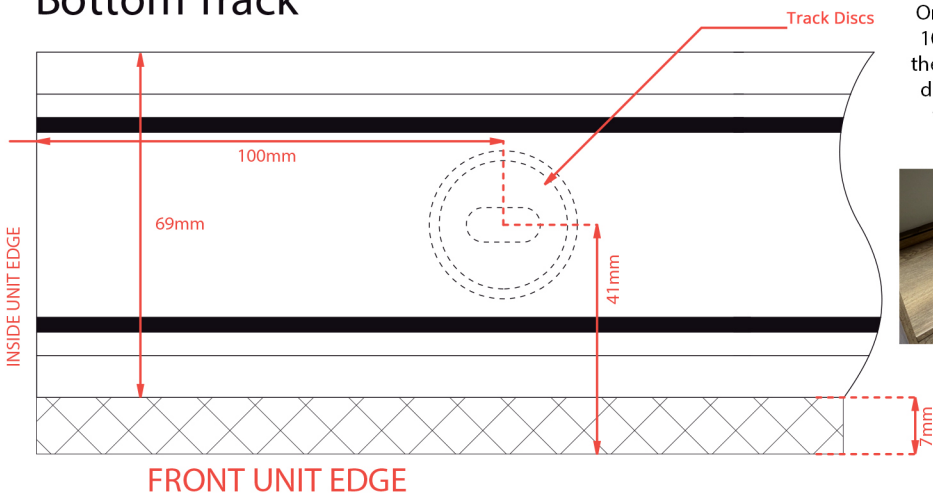
2. Place the actuator in any position on the top track and then push the door to the doorpost.

3. The actuator has been automatically located.

4. Fix the actuator



Bottom Track



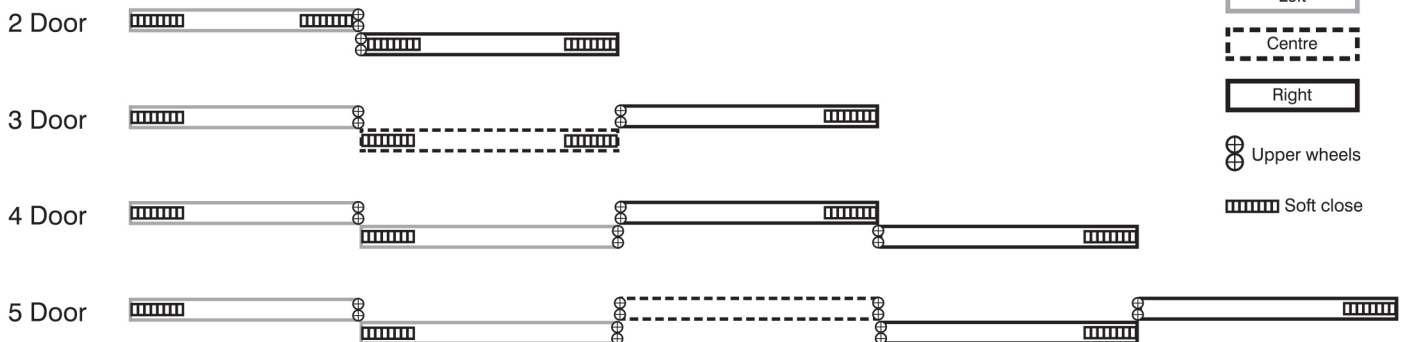
One disc should be placed 100mm from each side of the unit with the remaining discs spaced equally over the unit's width (Fig. 1)

If top track is flush with front edge of unit, centre of discs should be placed 41mm from the front edge



Once the discs have been fitted to the unit base (Fig. 1), the track can be fitted in place over the discs (Fig. 2)

Soft Close Door Configuration



Height Adjustment

*** We recommend lying the door on its side or supporting its weight before adjusting the wheels ***
Adjusting the wheels while the door is in situ could cause damage to the mechanism due to the weight of the door



- Lift the rubber seal.
- Using a 4mm allen key, **loosen but DO NOT REMOVE the screw.**
- The middle screw unlocks & locks the wheels into place once the height has been set.



- Lift the rubber seal.
- Use a 4mm allen key.
- The bottom screw adjusts the height of the door:
 - Clockwise - Up
 - Anti-clockwise - Down
- **DO NOT REMOVE THE SCREW.**