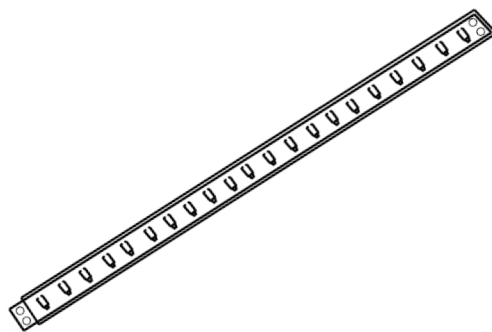


1 x PRIMO
5M REEL
FLEXIBLE STRIP LED



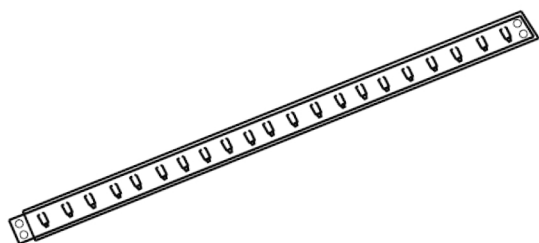
CODE: SE10055C0/W0

INSTALLATION
INSTRUCTIONS

IMPORTANT: please read these instructions before commencing installation and retain for future reference.

Components

Tools required



1 x 5m Primo flexible strip



1 x Fitting Instructions



Scissors

Important safety information

Please read these instructions carefully before attempting to install this product. It is advisable to keep these instructions in a safe place for further reference.

We recommend that you consult a qualified electrician. All electrical installation must be carried out in accordance with current IEE wiring regulations (BS7671)

These products must not be modified, if any modifications are made, it may invalidate the warranty and may render the product unsafe. These LED lights operate low voltage (24V).

Do not wire the individual LED light fittings directly to the mains. This product is suitable for indoor use only.

- If in doubt installation must be carried out by a qualified electrician
- Install on smooth flat surface(s) only
- Do not exceed or stretch the cable length
- The strip can be cut and reconnected every 100mm
- The wattage is 18W per 5m reel
- In order to run this product you will need a 2.5m driver connection cable (SE101080)

Safety instructions

1. Before commencing installation or maintenance, please clear the surrounding area of any trip hazards or sharp objects.
2. This product is only suitable for connecting to a 24V DC supply.
3. The light should be mounted onto a secure, clean surface using the instructions provided.
4. Never exceed the total output of the LED Driver.
5. Suitable for furniture lighting.
6. If an LED expires the fitting must be replaced.

Waste Electrical & Electronic Equipment (WEEE)

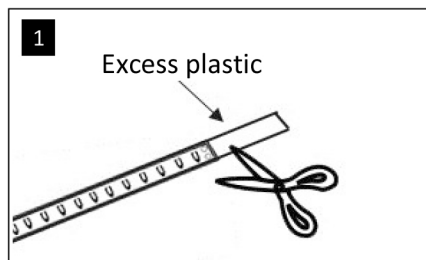
The Symbol on the product, or on the document accompanying the product, the crossed out wheele bin symbol, indicated that this product may not be treated as household waste. Instead it shall be handed over to the applicable collection point for the recycling of electrical and electronic waste.



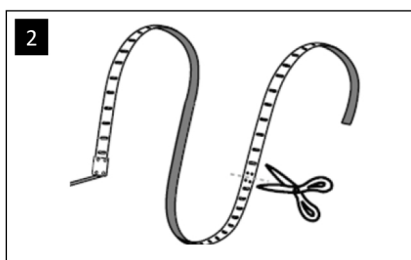
RoHS ✓
Compliant



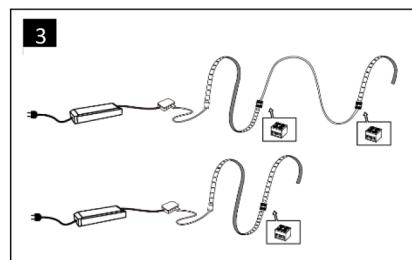
Installation



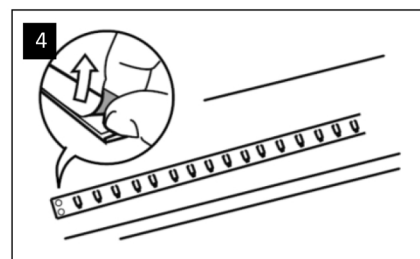
Unravel the flexible strip. There will be an excess of transparent plastic on the end of the strip that you should cut off, avoiding the strip by cutting only the transparent plastic.



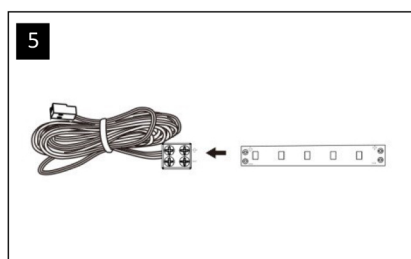
OPTIONAL: To alter the size of the LED strip, cut the strip using a pair of scissors. This must be done at the designated locations marked on the strip every 100mm.



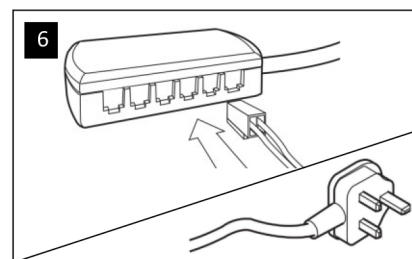
OPTIONAL: Connect two lengths of LED strip together using an end cap/interconnecting piece (SE100050), or a 50mm corner connector (SE101050).



Clean the desired surface. Remove the adhesive protector paper from the back of the LED strip and position on the surface.



Peel back the plastic cover to reveal contact points. Connect the end of the LED strip to the driver connection cable (SE101080) by carefully inserting the strip into the clip and firmly closing the cap.



Plug the connector on the end of the cable into the 24V LED driver distributor block. Beware not to exceed the wattage of the LED driver (24V). Finally, connect the LED driver to the 240V mains supply or 13A plug top.

Accessories



SE101080
2.5M Driver Connection Cable

*This item is required to run the flexible strip



SE100050
End Cap / Inter-connecting clip



SE101050
50mm Corner Connector

The Driver connection lead is an essential accessory for this flexible strip.

The End caps and corner connections are not essential, but recommended.

Maintenance & Care

- Ensure that the lights are switched off when cleaning
- To maintain the finish of the product, wipe with a soft cloth periodically
- Do not use harsh chemical solvents for cleaning, as this may dis-colour or damage the finish