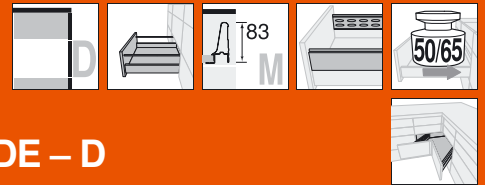


TANDEMBOX – pull-out system

► Basic elements

►► SPACE CORNER – high fronted pull-out – BOXSIDE – D



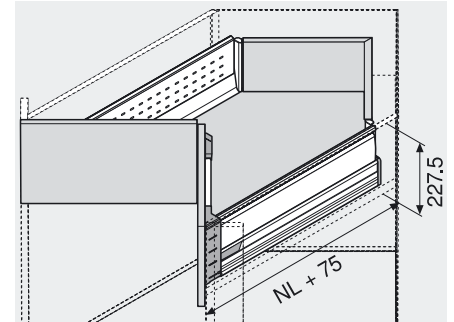
Product



Description

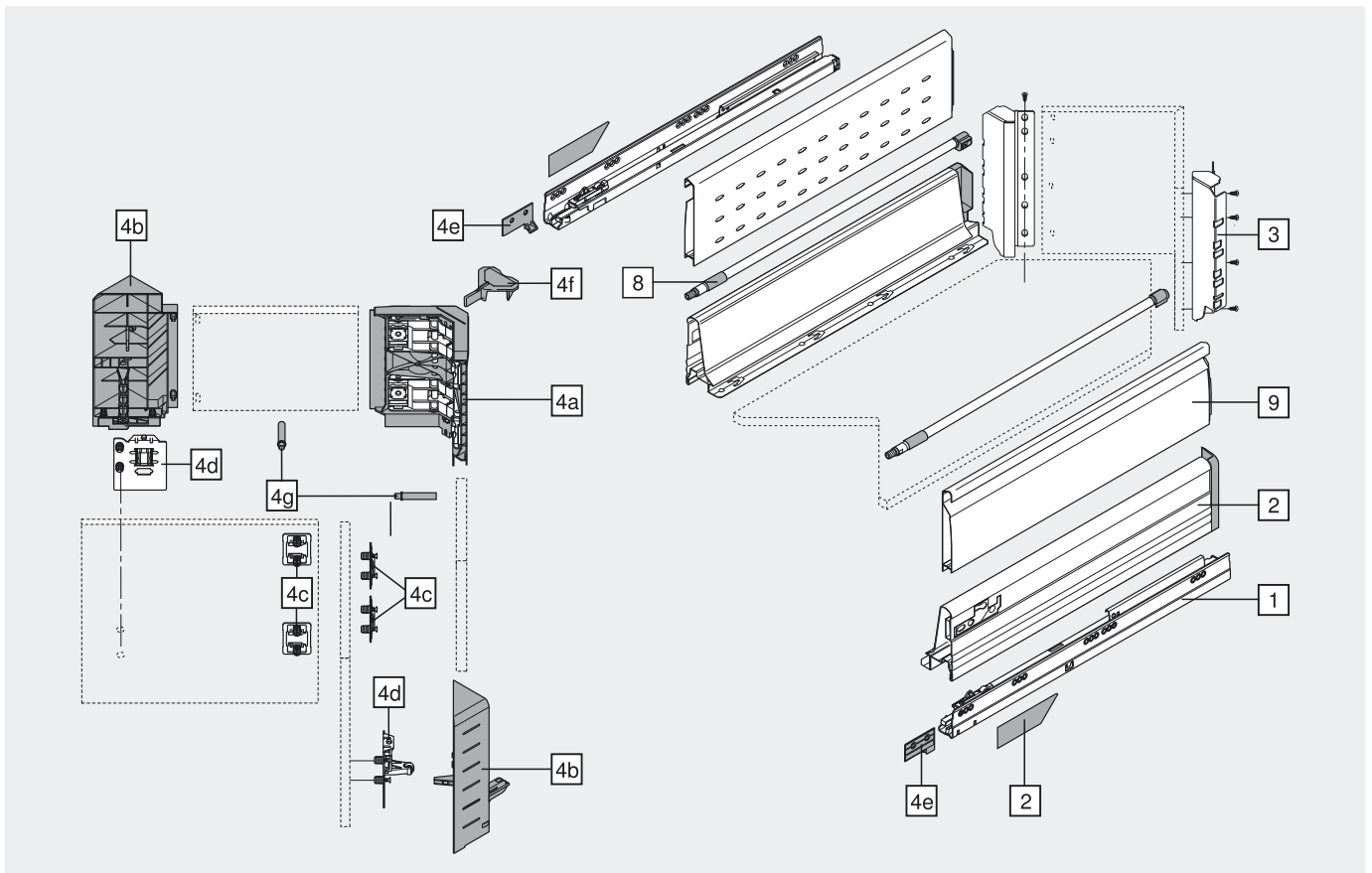
- Inspiring opening and closing function with SYNCROMOTION
- Use of standard fronts
- TANDEM inside – unparallelled running action for the lifetime of the furniture
- Steel drawer side white (W/G), steel grey (WA/G, RAL 9006), aluminium (EV/G) and stainless steel (IG/G, inox)
- Dyn. load bearing 50 and 65 kg
- 3-dimensional front adjustment
- Includes integrated **BLUMOTION** for a silent and effortless controlled closing action

Space requirement



NL Nominal length

Ordering information



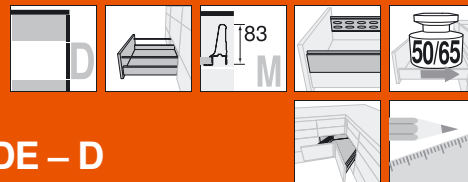
1	Cabinet profiles left/right			
Nominal length NL		50 kg		65 kg
600 mm	559.6001B		556.6001B	
650 mm	559.6501B		556.6501B	

2	Drawer sides and cover caps left/right			
	W/G	WA/G	EV/G (Alu)	IG/G (Inox)
	359M6002S	359M6002A	359M6002I	
	359M6502S	359M6502A	359M6502I	

8	Longside gallery rail left/right	
Nominal length NL	white, m. grey, alu, chrome	
600 mm	ZRG.546V.IC	
650 mm	ZRG.596V.IC	

Cover caps can be printed with customer name/logo – minimums from 1000 pcs

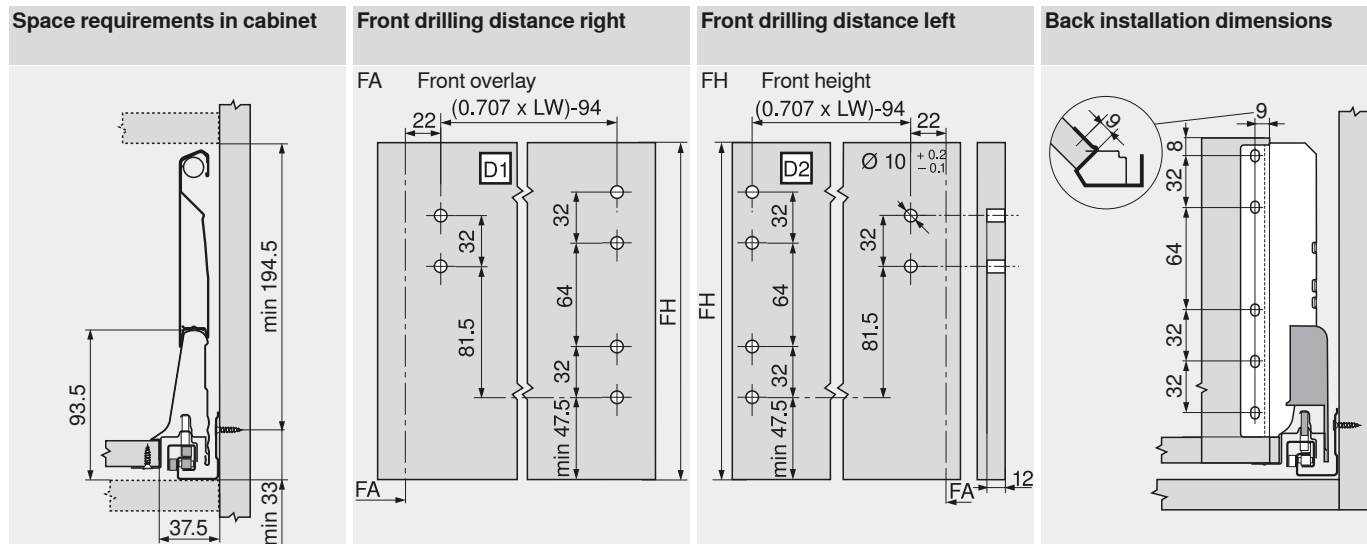
TANDEMBOX – pull-out system



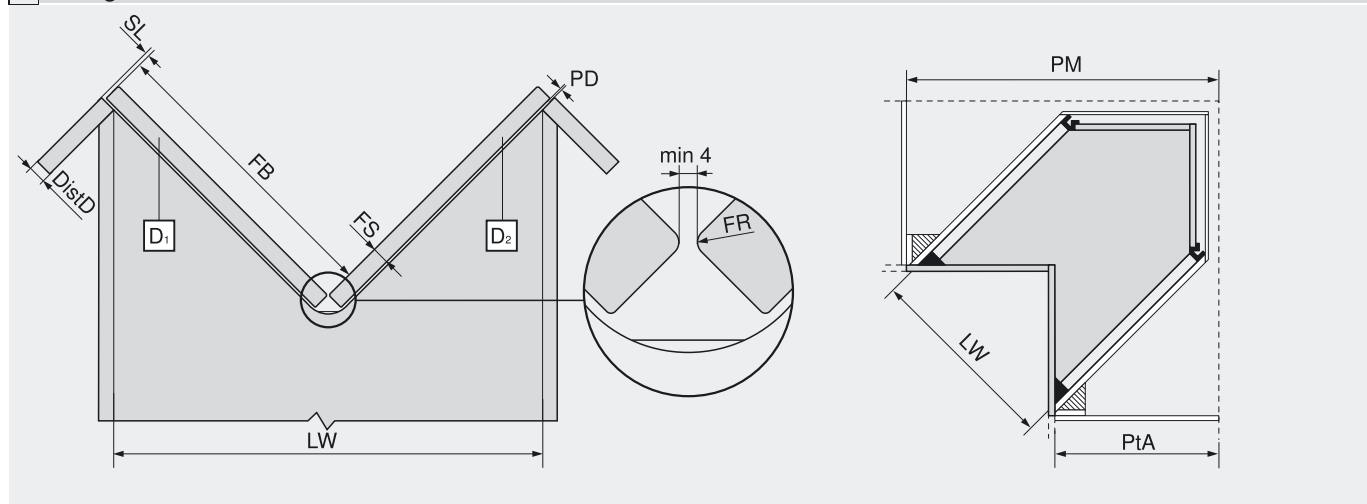
► Basic elements

►► SPACE CORNER – high fronted pull-out – BOXSIDE – D

Planning



Cutting dimensions for front



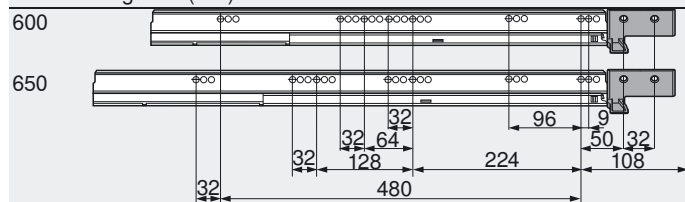
$$FB = PM - PtA - SL - PD - FD - (2.828 - (FR \times 0.586))$$

$$LW = (PM - PtA - DistD) \times 1.414$$

- LW Inner cabinet width
- PM Installation dimension
- PtA Connection cabinet installation depth
- FB Front width
- FS Front thickness
- SL Side gap
- PD Stop bumper thickness
- FR Front radius
- DistD Cabinet connection distance

Cabinet profile screw positions

Nominal length NL (mm)



Min. internal cabinet depth = nominal length NL + 75 mm

Cabinet profile fixing positions

269

We recommend planning with **DYNALOG**.

TANDEMBOX – pull-out system

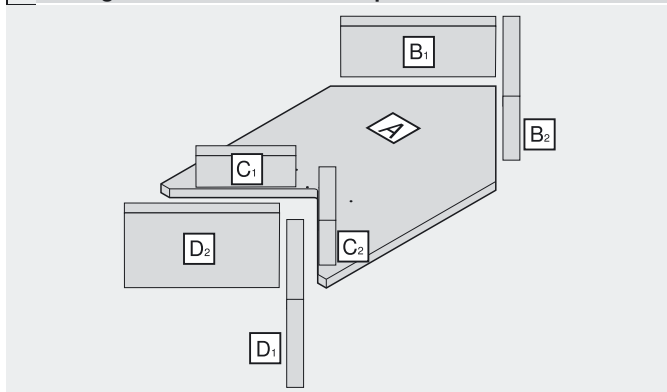


► Basic elements

►► SPACE CORNER – high fronted pull-out – BOXSIDE – D

Planning

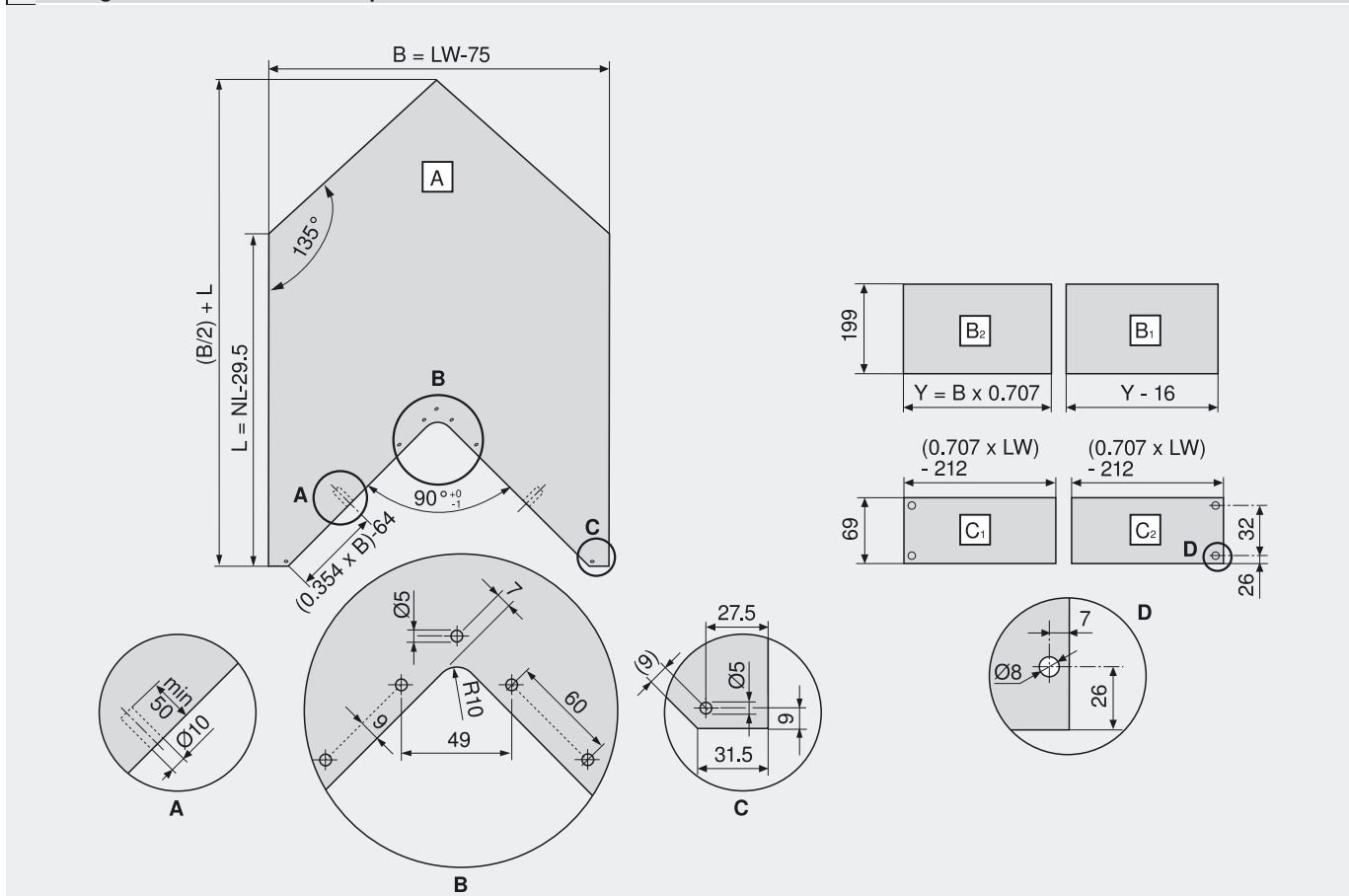
Cutting dimensions for 16 mm chipboard



- LW Internal cabinet width
- NL Nominal length
- PM Installation dimension
- PtA Connection cabinet installation depth
- L Drawer base drawer side length
- B Drawer base width
- Y Drawer back width

We recommend planning with **DYNALOG**.

Cutting dimensions for 16 mm chipboard



Page instructions

Overview – TANDEMBOX plus BLUMOTION – basic elements	216	ORGA-LINE-application – open provisions	341
Overview – ORGA-LINE for TANDEMBOX	318	Accessories	265
ORGA-LINE-application – provisions	336	Assembly and adjustment	270
ORGA-LINE-application – crockery	337	Assembly devices	556
ORGA-LINE-application – plastic containers	338	More technical details	658