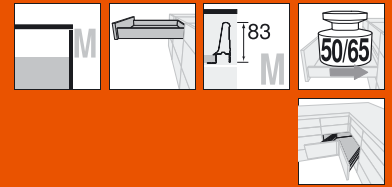


TANDEMBOX – pull-out system



► Basic elements

►► SPACE CORNER – drawer – M

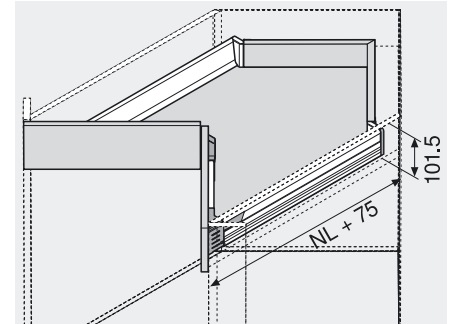
Product



Description

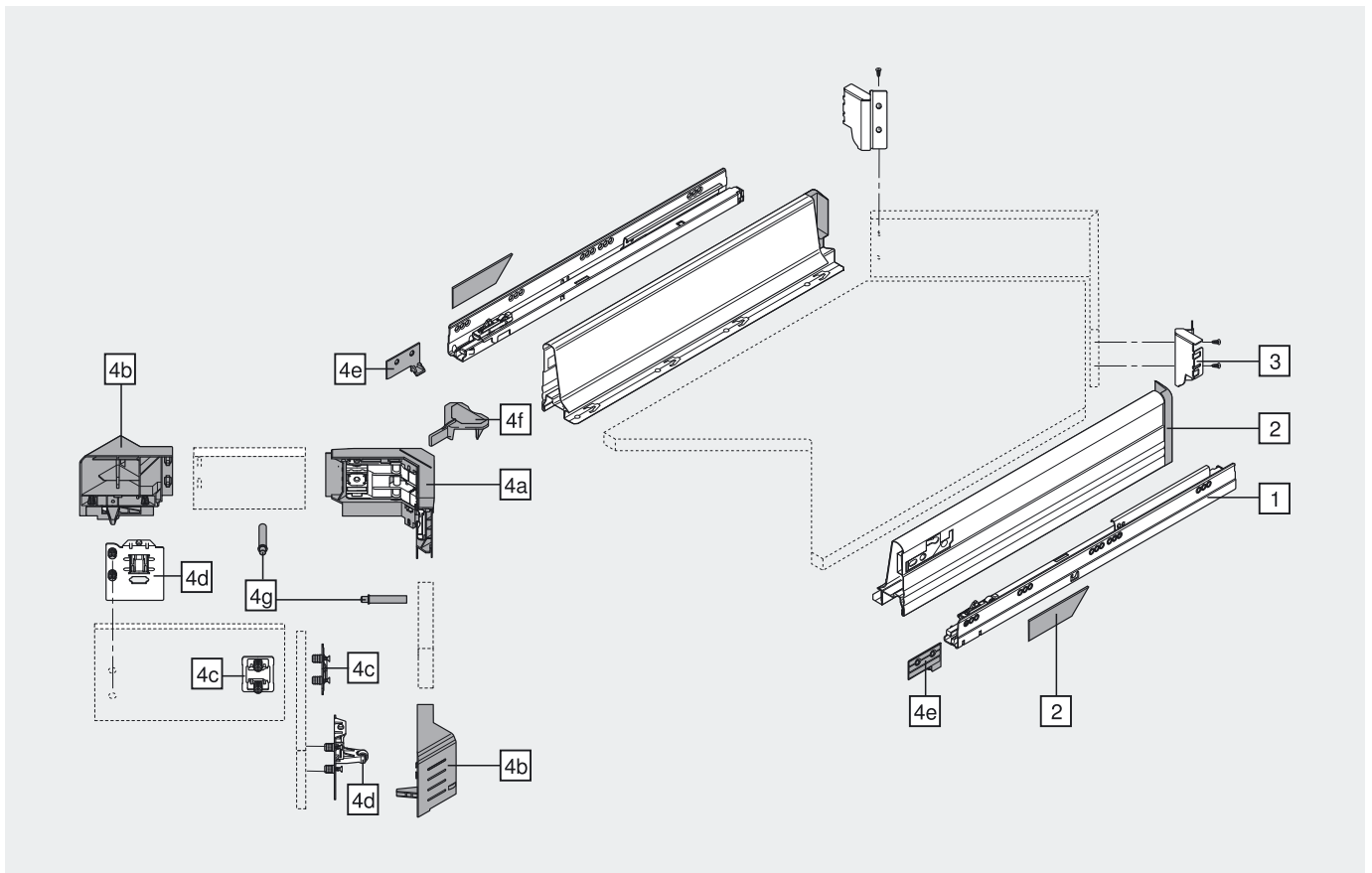
- Inspiring opening and closing function with SYNCROMOTION
- Use of standard fronts
- TANDEM inside – unparalleled running action for the lifetime of the furniture
- Steel drawer side white (W/G), steel grey (WA/G, RAL 9006), aluminium (EV/G) and stainless steel (IG/G, inox)
- Dyn. load bearing 50 and 65 kg
- 2-dimensional front adjustment
- Includes integrated **BLUMOTION** for a silent and effortless controlled closing action

Space requirement



NL Nominal length

Ordering information

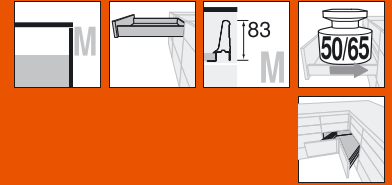


1	Cabinet profiles left/right			
Nominal length NL	50 kg	65 kg		
600 mm	559.6001B	556.6001B		
650 mm	559.6501B	556.6501B		

2	Drawer sides and cover caps left/right			
W/G	WA/G	EV/G (Alu)	IG/G (Inox)	
359M6002S	359M6002A	359M6002I		
359M6502S	359M6502A	359M6502I		

Cover caps can be printed with customer name/logo – minimums from 1000 pcs

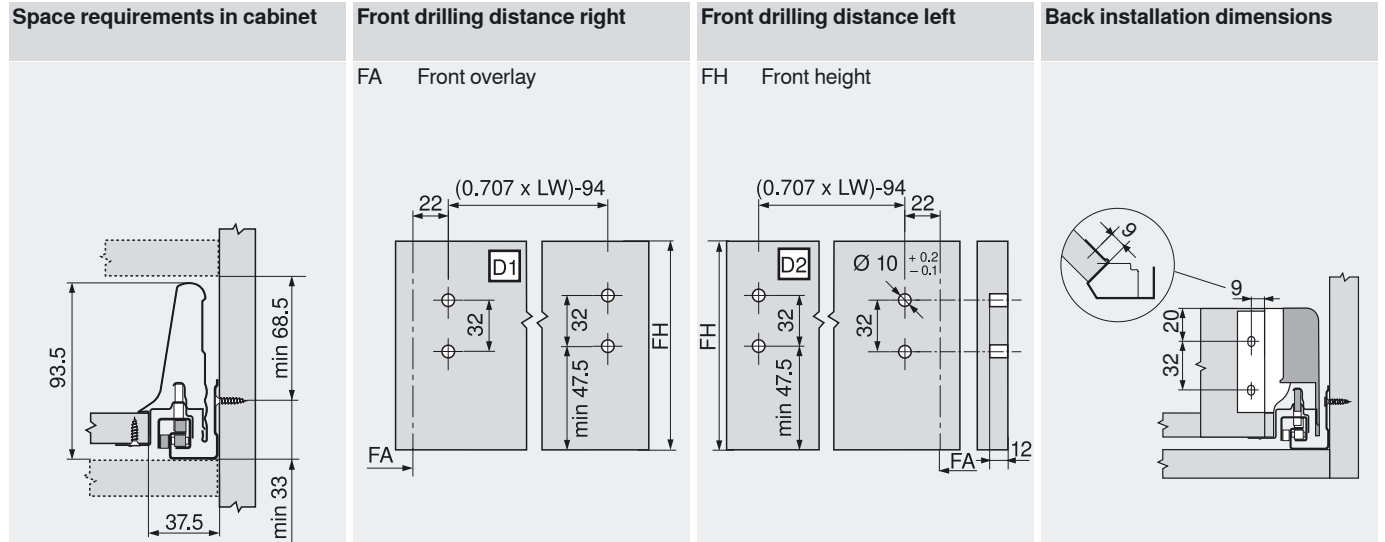
TANDEMBOX – pull-out system



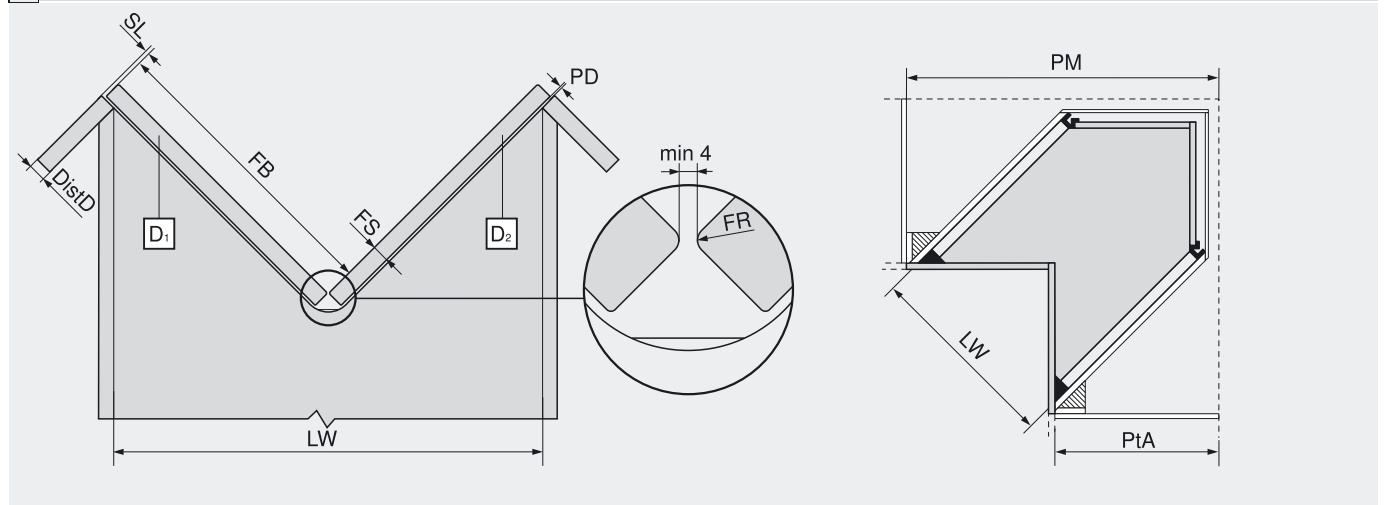
► Basic elements

►► SPACE CORNER – drawer – M

Planning



Cutting dimensions for front



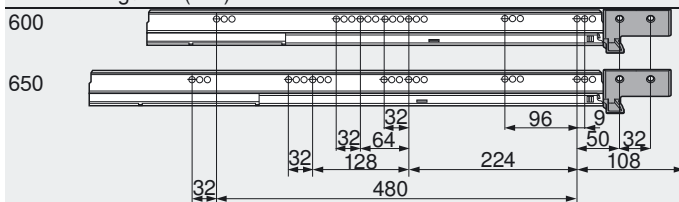
$$FB = PM - PtA - SL - PD - FD - (2.828 - (FR \times 0.586))$$

$$LW = (PM - PtA - DistD) \times 1.414$$

- LW Inner cabinet width
- PM Installation dimension
- PtA Connection cabinet installation depth
- FB Front width
- FS Front thickness
- SL Side gap
- PD Stop bumper thickness
- FR Front radius
- DistD Cabinet connection distance

Cabinet profile screw positions

Nominal length NL (mm)



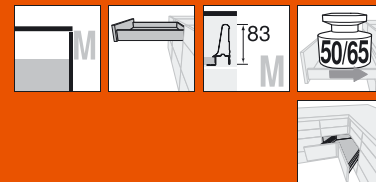
Min. internal cabinet depth = nominal length NL + 75 mm

Cabinet profile fixing positions

269

We recommend planning with **DYNALOG**.

TANDEMBOX – pull-out system

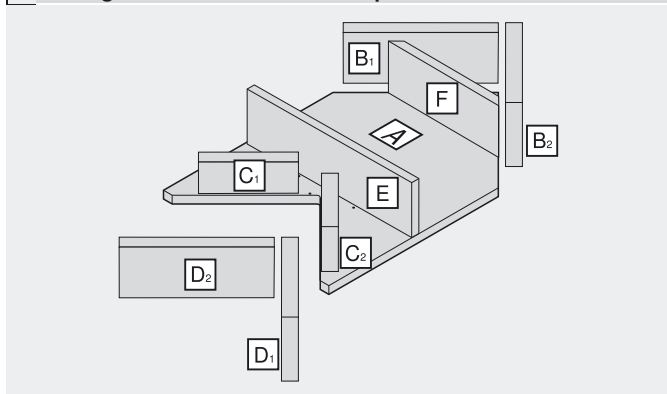


► Basic elements

►► SPACE CORNER – drawer – M

Planning

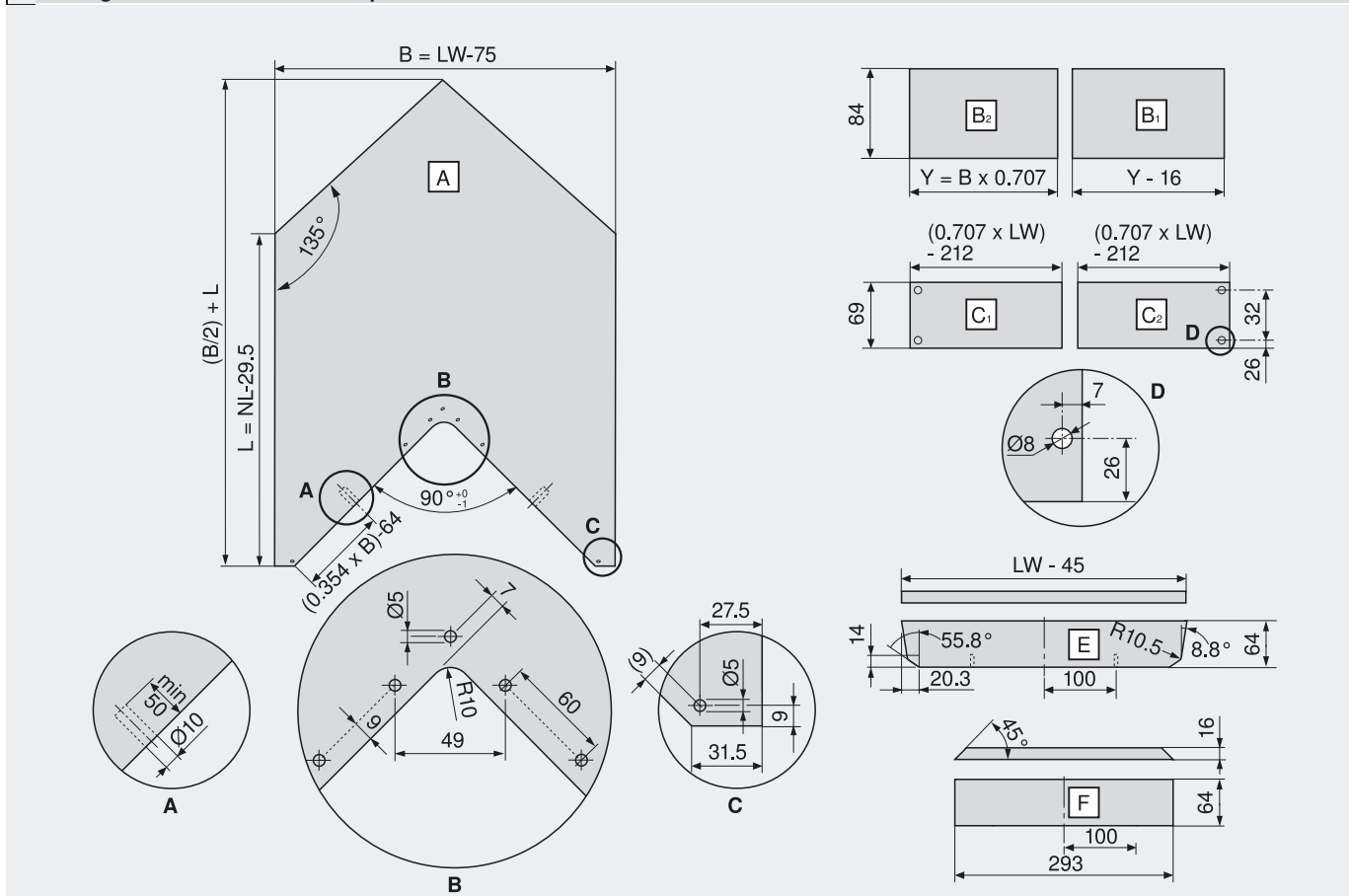
Cutting dimensions for 16 mm chipboard



- LW Internal cabinet width
- NL Nominal length
- PM Installation dimension
- PtA Connection cabinet installation depth
- L Drawer base drawer side length
- B Drawer base width
- Y Drawer back width

We recommend planning with **DYNALOG**.

Cutting dimensions for 16 mm chipboard



Page instructions

Overview – TANDEMBOX plus BLUMOTION	Accessories	265
– basic elements	Assembly and adjustment	270
Overview – ORGA-LINE for TANDEMBOX	Assembly devices	556
	More technical details	658
ORGA-LINE-application – cutlery		322
ORGA-LINE-application – odds & ends		324
ORGA-LINE-application – kitchen utensils/knives/small electric appliances		328